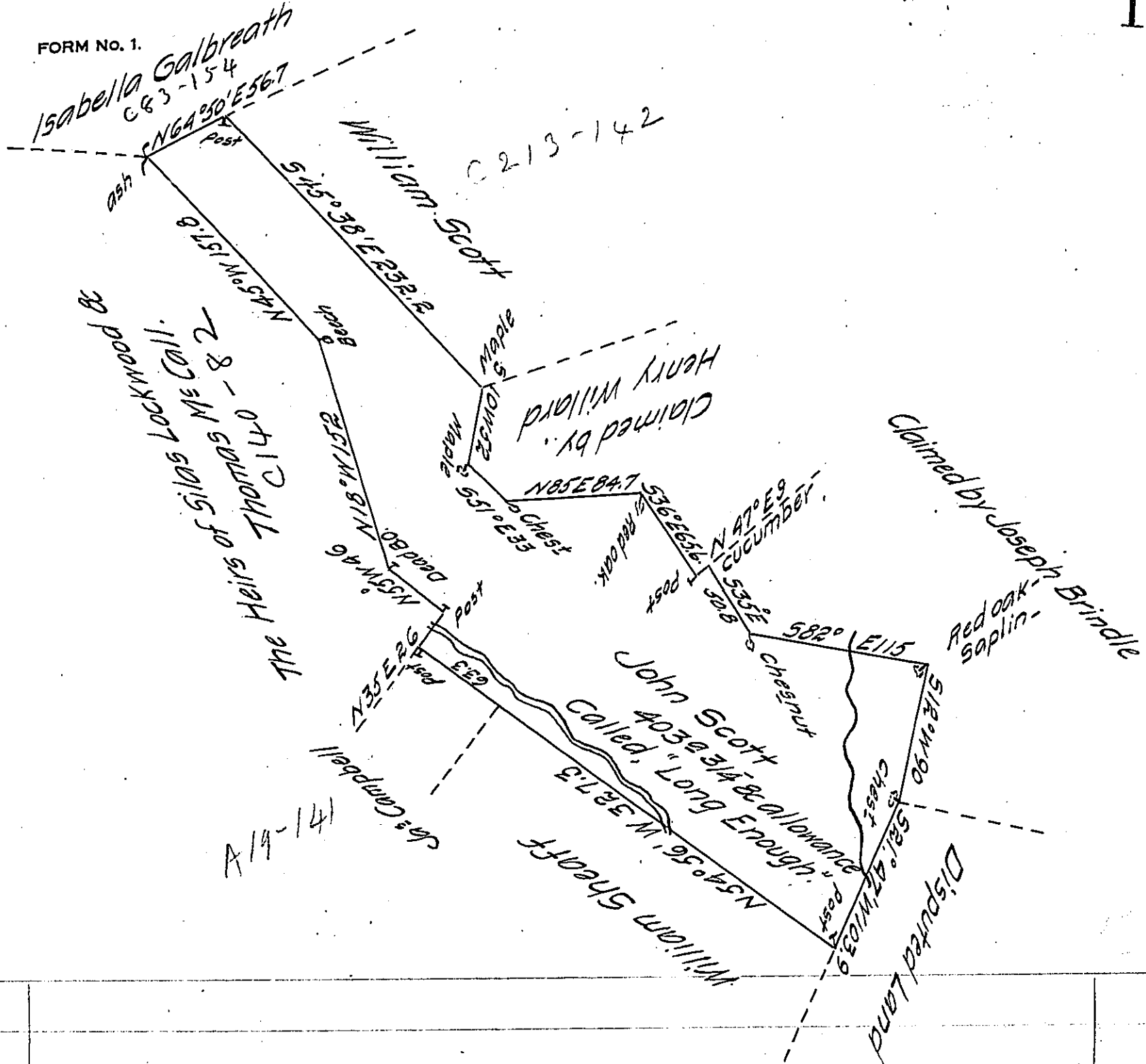


FORM NO. 1.



Situated on the Head Waters of Shavers Mill Run
 in Somerset Township Somerset County, late Milford
 Township Bedford County, and Surveyed the 19th Day of
 December 1795 In Pursuance of a Warrantt Dated the
 4th Day of February 1794.

To Daniel Brodhead Esq^r } p Alexander McClean Deputy.
 Surveyor General }

IN TESTIMONY that the above is a copy of the original remaining on file in
 the Department of Internal Affairs of Pennsylvania, made
 comformably to an Act of Assembly approved the 16th day of
 February 1833, I have hereunto set my hand and caused
 the Seal of said Department to be affixed at Harrisburg,
 this first day of February 1907.

Loose P. Brown
 Secretary of Internal Affairs.